

SPACETOUCH

FULL BODY DEVICE

COSMO



COSMO USER GUIDE

HELLO!

Thank you for purchasing Cosmo and welcome to the Spacetouch family!

There is no better investment than investing in yourself! You are now part of a growing community of millions of people who use advanced LED skincare therapy to achieve flawless skin.

As you unbox your new device, take a few moments to review the manual and become familiar with its features before using your Cosmo device. The instructions provide important details on how to safely operate your device.

Spacetouch is committed to providing you with the best skincare experience possible. If you have any questions or concerns, our friendly and knowledgeable customer service team is here to help. You can reach us at Service@Spacetouch.com.

TABLE OF CONTENTS

1	What Is Cosmo?	01
2	How Does It Work?	02
3	Technical Specifications	05
4	Compliance	05
5	Package Contents	05
6	How To Use Cosmo	06
7	Treatment Index	10
8	Contraindications, Warnings, and Precautions	25
9	Light Sensitivity Test	26
10	Limited Lifetime Warranty	26
11	Register Your Device	27

WHAT IS COSMO?

Cosmo is a revolutionary full-body LED device that offers a range of features to make at-home LED treatments more efficient and effective than ever before. With its patented foldable and portable design, Cosmo is easy to take with you wherever you go, allowing you to experience the benefits of LED light therapy no matter where you are. With a width of 23 inches and 360 LED and infrared points, Cosmo is the most potent and efficient full-body LED device to be used on any area of the body.

Cosmo offers four light treatments - red, blue, green, and yellow wavelengths - all of which can be used on your face, neck, and body. Each mode of treatment targets a different set of concerns, allowing you to customize your LED light therapy experience to meet your specific needs. One of the most innovative features of Cosmo is its flash mode, which uses AI technology to analyze your skin while you use the device and adjust the wavelength of the light during your treatment. This ensures that you get the most effective treatment possible, tailored to your skin's unique needs. Designed by plastic surgeons and dermatologists in Germany, Cosmo incorporates multiple technologies into one treatment to target a wide array of concerns so you can experience the benefits of LED light therapy from the comfort of your own home.

infectious skin disease, either do not use or consult with your doctor before use.



HOW DOES IT WORK?

Light therapy is a non-invasive treatment that utilizes light at precise wavelengths to penetrate the skin's surface without causing any damage. Light therapy was originally developed by NASA for astronauts who could become injured or ill on long-term space missions, is used today as a safe and natural method of treatment for a variety of skin and medical conditions. The light stimulates natural chemical reactions in the skin cells, triggering the rejuvenation and healing processes. Developed by leading plastic surgeons and dermatologists, Cosmo is a home-use light device that effectively addresses a plethora of various skin concerns via its 5 available modes of treatment and 1 add-on setting:

RED LIGHT SETTING

The red light setting is designed to reduce signs of aging. From the age of 22 onwards, our skin loses between 1-2% of its collagen every year. Collagen plays a critical role as the "glue" between our skin layers, imparting a plump appearance to our skin. As the collagen dwindles, our skin becomes drier and less supple, leading to the emergence of visible lines and wrinkles on the surface of the skin. Furthermore, factors like sleep deprivation, dehydration, sun exposure, and smoking can exacerbate these aging effects. The red light setting is designed to assist the reproduction of cells, collagen, and fiber and reaches the hypodermis level, the deepest and thickest layer of the skin. Consistent use of healthy lifestyle choices and red light LED treatment can effectively halt the reduction of collagen as we age and in some cases, even boost the body's natural collagen production. Therefore, it's crucial to start utilizing red LED light therapy as early as possible.

BLUE LIGHT SETTING

The blue light setting is designed to improve skin texture and reduce sebaceous hyperplasia (enlarged oil glands). It can help with reducing the appearance of actinic keratoses (sun spots), acne, and even acne scarring. This treatment can be used in tandem with other products as part of an acne treatment plan. In addition to its cosmetic benefits, blue light therapy has been shown to promote the synthesis of protein and bone collagen, and it can also help with whitening skin and teeth. Blue light therapy is also effective in managing neonatal jaundice, skin conditions such as allergy-based and oily skin, and the relaxation of nerves. It can also provide pain relief and is used for the clinical treatment of goiter, chronic heart disease, insomnia, and menopausal syndrome.

GREEN LIGHT SETTING

The green light setting is designed to stimulate collagen production, reduce inflammation, and improve energy levels. In addition to its cosmetic benefits, green light therapy has been used clinically to treat various health conditions. It has been shown to be effective in improving asthma symptoms, relieving climacteric syndrome, and treating nerve numbness and kidney diseases. It has also been used to manage diabetes and digestive tract diseases, making it a valuable treatment option for those seeking to improve their overall health.

YELLOW LIGHT SETTING

The yellow light setting is designed to treat skin redness and flushing, rosacea, UV radiation damage and reduce the appearance of telangiectasias (ruptured blood vessels) on the nose and face.

● CYCLE SETTING

The cycle setting is designed to provide the ultimate in-skin treatment by combining all four lights (blue, red, green, and yellow) to rejuvenate and heal all skin tissues. This is a fantastic option for those wanting to target multiple concerns in a single treatment and improve general health and well-being. This mode is set automatically to 30 minutes, with adjustable timing to what you wish or your skin specialist recommends.

● FLASH SETTING

The flash setting is a revolutionary AI feature that you can add on to all available treatments. This innovative setting utilizes light pulses to analyze your skin every 15 seconds, automatically adjusting the light wavelength throughout your treatment. This ensures that you receive a personalized treatment that responds to the current condition of your skin, making LED light therapy more effective and safer than ever before.

If you would like to take a more hands-on approach to your treatment, Cosmo allows you to manually adjust the wavelength of your treatment by adjusting the heat. This hands-on approach was once only available in clinics, but now you can have that same level of customization from the comfort of your own home. With this feature, you have the freedom to adjust the intensity and wavelength of your treatment to suit your unique needs.

TECHNICAL SPECIFICATIONS

Cosmo weight: 6.1KG / 13.44 LBS

Product measurement: 58 X 30 X 58CM / 22.8 X 11.8 X 22.8IN

Input power: 100- 240V

COMPLIANCE

All Spacetouch LED devices are approved by the U.S. Food and Drug Administration (FDA) and comply with the international standard of basic safety for medical devices IEC 60601 and with the relevant collateral and particular standards for non-laser light source medical equipment for home use IEC 60825-1 and IEC 62471 Photobiological Safety of Lamps and Lamp Systems. Spacetouch devices also conform to the application of risk management to medical devices ISO 14971, and biological evaluation of medical devices in tests for invitro cytotoxicity ISO 10993-5 and irritation and skin sensitization ISO 10993-10.

PACKAGE CONTENTS

User manual

VIP warranty card

Cosmo LED device

Power adapter

Protective glasses

Two wires

HOW TO USE COSMO

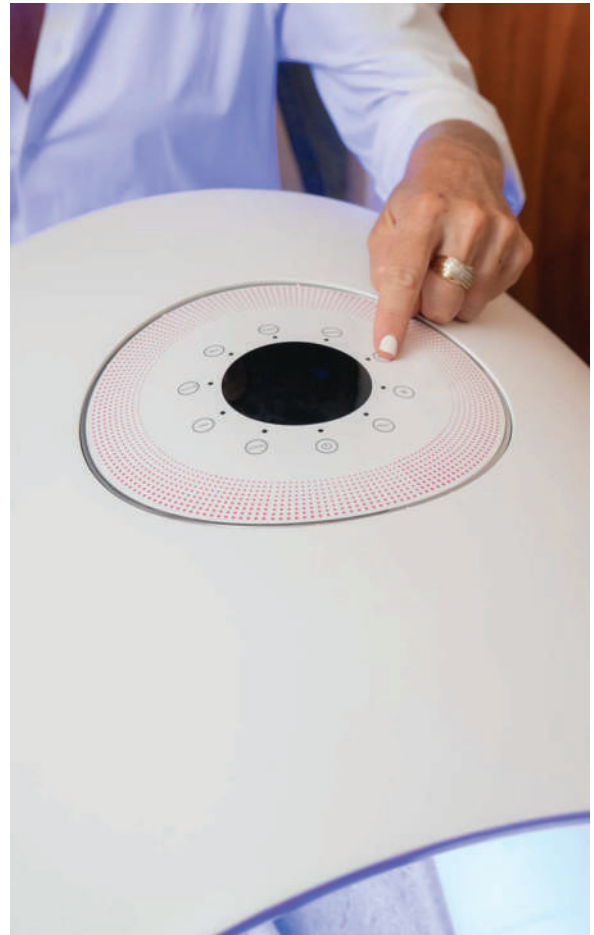
TURNING THE DEVICE ON

Unfold the device and place it on a safe surface. Then connect the Cosmo to a power outlet using the power bank and two wires. Connect the first wire to the power adapter and electrical outlet. Then connect the second wire to the power bank and device. When properly connected the power adapter will light up and the device will beep and blink, signaling that your device is connected to power and is ready to use. Only use the original cable provided as other cables may damage the device.

To turn the device on, gently tap the power icon. Wait for 3 seconds to load and then select your treatment.

USING THE DEVICE

Start by turning on the heat if required. If not, proceed to the next step of selecting the duration of treatment. Adjust the timer via the plus or minus icons. Your icon will lock



once the duration is selected. To reset the selected timer turn the device on and off using the power icon to reset the treatment. Lastly, select between the 5 modes of treatment by tapping on the relevant icons. This will result in the LED light turning on, indicating that treatment has started. You can also choose to add on the flash setting if desired by tapping the flash icon.

Once all required modes are selected, sit back, relax, and enjoy your customized treatment!

When treatment is complete, the device will automatically turn off. To manually turn the device off, hold the button down until the lights turn off. Finish with your favorite moisturizer or serum for maximum results. To clean the device, wipe the device with a damp cloth or alcohol.

LIGHT THERAPY GUIDE

A woman with dark hair is lying on her stomach on a grey couch, propped up on her elbows and looking towards the camera. She is wearing a red bikini top. A large, red, modern-style lamp is positioned behind her, casting a warm red glow over her and the couch. In the background, a wooden chair with a black seat is visible on a patio, with a blurred green lawn and trees in the distance.

We have detailed treatment instructions
from our worldwide specialists



SPACETOUCH



TREATMENT INDEX

Scars	11	Pigmentation	19
Stretch Marks & Spider Veins	12	Solar Keratoses (Sun Spots)	20
Cellulitis	13	Erythema (Redness)	21
Rosacea	14	Sagging Skin	22
Eczema	15	Neck Pain	23
Psoriasis	16	Hair Growth	24
Wrinkles	17		
Acne	18		

SCARS

SEAN MERLING



TARGET
Scars



AREAS OF USE
Face, body, and
all areas of concern



DOSE
60 Minutes
per treatment



TREATMENT LENGTH
4 Times per week
for 6 months

DIRECTION

This treatment contains two steps, one using the red LED light and the other using the green LED light. Connect the Cosmo to a power outlet and place it on a safe, flat surface. Tap the power icon to turn on the device. Set the temperature to 50 degrees Celsius and the timer to 40 minutes, and select the red mode. Place the device above the desired treatment area for 40 minutes. Once the red LED light treatment is complete, set the temperature to 50 degrees Celsius again and the timer to 20 minutes. Select the green mode and place it above the same treatment area for 20 minutes. After completing both treatments, apply your favorite cream or one recommended by a specialist.

IMPORTANT: When placing the device over the facial area, it is essential to wear the protective glasses that come with the device to avoid damage to your eyes.



TEMPERATURE
50 degrees Celsius



TIMER
40 & 20 Minutes



LIGHT
Red & Green



STRETCH MARKS & SPIDER VEINS

DR. MICHAEL MCGEE



TARGET

Stretch marks & spider veins



AREAS OF USE

Body and all areas of concern



DOSE

60 Minutes per treatment



TREATMENT LENGTH

4 Times per week for 3 months

DIRECTION

This treatment contains two steps, one using the red LED light and the other using the yellow LED light. Connect the Cosmo to a power outlet and place it on a safe, flat surface. Tap the power icon to turn on the device. Set the temperature to 50 degrees Celsius and the timer to 40 minutes. Select the Red Mode and place the device above the desired treatment area for 40 minutes. Once the red LED light treatment is complete, set the temperature to 50 degrees Celsius again and the timer for 20 minutes. Select the yellow mode and place the device above the same treatment area for 20 minutes. After completing both treatments, apply your favorite cream or one recommended by a specialist.

IMPORTANT: When placing the device over the facial area, it is essential to wear the protective glasses that come with the device to avoid damage to your eyes.



TEMPERATURE

50 degrees Celsius



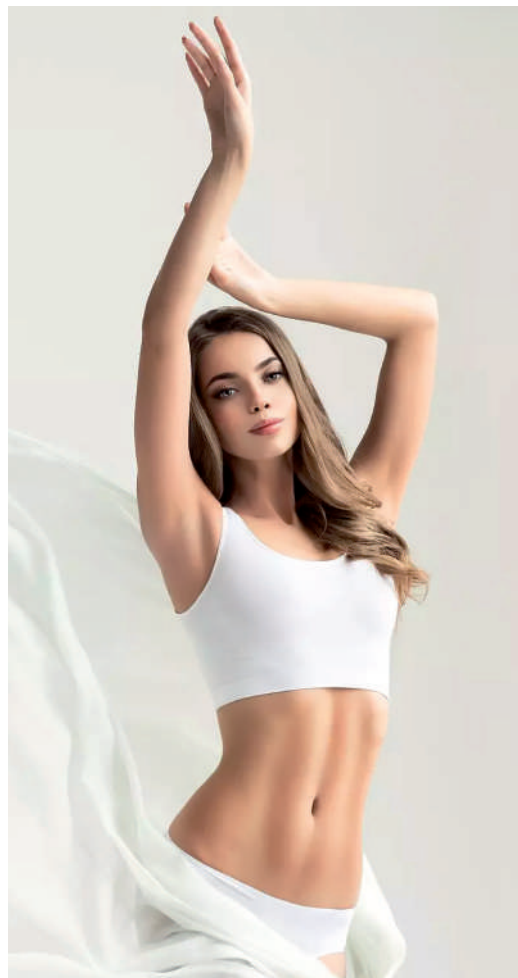
TIMER

40 & 20 Minutes



LIGHT

Red & Yellow



CELLULITIS

DR. JANA BELVIEW



TARGET
Cellulitis



AREAS OF USE
Face, body, and
all areas of concern



DOSE
30 Minutes
per treatment



TREATMENT LENGTH
5 Times per week
for 3 months

DIRECTION

This treatment utilizes red light LED therapy and heat. Connect the Cosmo to a power outlet and place it on a safe, flat surface. Tap the power icon to turn on the device. Set the temperature to 55 degrees Celsius and the timer to 30 minutes. Select the red mode and place the device above the desired treatment area for 30 minutes. After completing the treatment, apply your favorite cream or one recommended by a specialist.

IMPORTANT: When placing the device over the facial area, it is essential to wear the protective glasses that come with the device to avoid damage to your eyes.



TEMPERATURE
55 degrees Celsius



TIMER
30 Minutes



LIGHT
Red



ROSACEA

DR. MICHAEL MCGEE



TARGET
Rosacea



AREAS OF USE
Face and all
areas of concern



DOSE
45 Minutes
per treatment



TREATMENT LENGTH
4 Times per week
for 3 months

DIRECTION

This treatment utilizes yellow light LED therapy and heat. Connect the Cosmo to a power outlet and place it on a safe, flat surface. Tap the power icon to turn on the device. Set the temperature to 40 degrees Celsius and the timer to 45 minutes. Select the yellow mode and place the device above the desired treatment area for 45 minutes. After completing the treatment, apply your favorite cream or one recommended by a specialist.

IMPORTANT: When placing the device over the facial area, it is essential to wear the protective glasses that come with the device to avoid damage to your eyes.



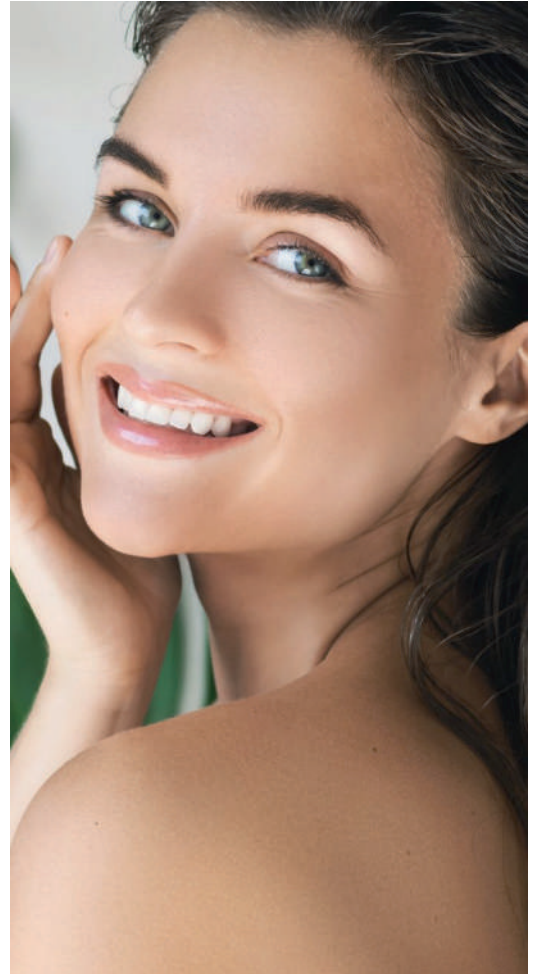
TEMPERATURE
40 degrees Celsius



TIMER
45 Minutes



LIGHT
Yellow



ECZEMA

DR. MICHAEL MCGEE



TARGET
Eczema



AREAS OF USE
Face, body, and
all areas of concern



DOSE
40 Minutes
per treatment



TREATMENT LENGTH
3 Times per week
for 3 months

DIRECTION

This treatment contains two steps, one using the red LED light and the other using the yellow LED light. Connect the Cosmo to a power outlet and place it on a safe, flat surface. Tap the power icon to turn on the device. Set the temperature to 40 degrees Celsius and the timer to 25 minutes. Select the red Mode and place the device above the desired treatment area for 25 minutes. Once the red LED light treatment is complete, set the temperature to 40 degrees Celsius again and the timer for 15 minutes. Select the yellow mode and place the device above the same treatment area for 15 minutes. After completing both treatments, apply your favorite cream or one recommended by a specialist.

IMPORTANT: When placing the device over the facial area, it is essential to wear the protective glasses that come with the device to avoid damage to your eyes.



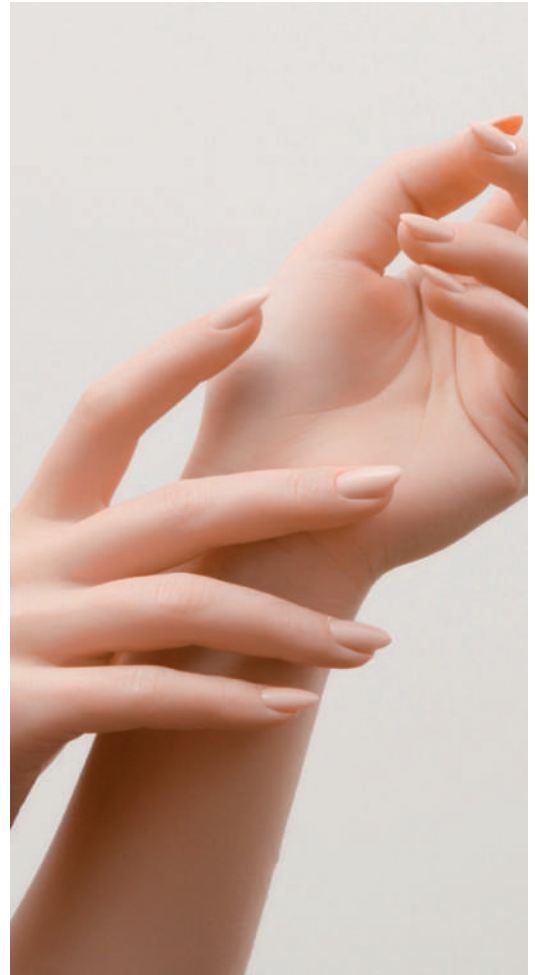
TEMPERATURE
40 & 40 degrees Celsius



TIMER
25 & 15 minutes



LIGHT
Red & yellow



PSORIASIS

ROLANDE FRANK



TARGET
Psoriasis



AREAS OF USE
Face, body, and
all areas of concern



DOSE
35 Minutes
per treatment



TREATMENT LENGTH
5 Times per week
for 3 months

DIRECTION

This treatment utilizes red light LED therapy and heat. Connect the Cosmo to a power outlet and place it on a safe, flat surface. Tap the power icon to turn on the device. Set the temperature to 40 degrees Celsius and the timer to 35 minutes, and select the red mode. Place the device above the desired treatment area for 35 minutes. After completing the treatment, apply your favorite cream or one recommended by a specialist.

IMPORTANT: When placing the device over the facial area, it is essential to wear the protective glasses that come with the device to avoid damage to your eyes.



TEMPERATURE
40 degrees Celsius



TIMER
35 Minutes



LIGHT
Red



WRINKLES

DR. ACHIM LEUTH



TARGET
Wrinkles



AREAS OF USE
Face, body, and
all areas of concern



DOSE
60 Minutes
per treatment



TREATMENT LENGTH
3 Times per week
for 6 months

DIRECTION

This treatment contains two steps, one using the red LED light and the other using the blue LED light. Connect the Cosmo to a power outlet and place it on a safe, flat surface. Tap the power icon to turn on the device. Set the temperature to 60 degrees Celsius and the timer to 40 minutes. Select the red Mode and place the device above the desired treatment area for 40 minutes. Once the red LED light treatment is complete, set the temperature to 60 degrees Celsius again and the timer for 20 minutes. Select the blue mode and place the device above the same treatment area for 20 minutes. After completing both treatments, apply your favorite cream or one recommended by a specialist.

IMPORTANT: When placing the device over the facial area, it is essential to wear the protective glasses that come with the device to avoid damage to your eyes.



TEMPERATURE
60 & 60 degrees Celsius



TIMER
40 & 20 minutes



LIGHT
Red & Blue



ACNE

ROLANDE FRANK



TARGET
Acne



AREAS OF USE
Face, body, and all
areas of concern



DOSE
45 Minutes
per treatment



TREATMENT LENGTH
4 Times per week
for 3 months

DIRECTION

This treatment contains two steps, one using the red LED light and the other using the blue LED light. Connect the Cosmo to a power outlet and place it on a safe, flat surface. Tap the power icon to turn on the device. Set the temperature to 50 degrees Celsius and the timer to 30 minutes. Select the red Mode and place the device above the desired treatment area for 30 minutes. Once the red LED light treatment is complete, set the temperature to 50 degrees Celsius again and the timer for 15 minutes. Select the blue mode and place the device above the same treatment area for 15 minutes. After completing both treatments, apply your favorite cream or one recommended by a specialist.

IMPORTANT: When placing the device over the facial area, it is essential to wear the protective glasses that come with the device to avoid damage to your eyes.



TEMPERATURE
50 & 50 degrees Celsius



TIMER
30 & 15 minutes



LIGHT
Red & Blue



PIGMENTATION

DR. JANA BELVIEW



TARGET

Pigmentation



AREAS OF USE

Face, body, and all areas of concern



DOSE

60 Minutes
per treatment



TREATMENT LENGTH

3 Times per week
for 3 months

DIRECTION

This treatment contains two steps, one using the blue LED light and the other using the green LED light. Connect the Cosmo to a power outlet and place it on a safe, flat surface. Tap the power icon to turn on the device. Set the temperature to 60 degrees Celsius and the timer to 30 minutes. Select the blue Mode and place the device above the desired treatment area for 30 minutes. Once the blue LED light treatment is complete, set the temperature to 60 degrees Celsius again and the timer for 30 minutes. Select the green mode and place the device above the same treatment area for 30 minutes. After completing both treatments, apply your favorite cream or one recommended by a specialist.

IMPORTANT: When placing the device over the facial area, it is essential to wear the protective glasses that come with the device to avoid damage to your eyes.



TEMPERATURE

60 & 60 degrees Celsius



TIMER

30 & 30 minutes



LIGHT

Blue & Green



SOLAR KERATOSES (SUN SPOTS)

DR. MICHAEL MCGEE



TARGET
Sunspots



AREAS OF USE
Face, body, and all
areas of concern



DOSE
60 Minutes
per treatment



TREATMENT LENGTH
5 Times per week
for 3 months

DIRECTION

This treatment contains three steps of LED light- blue, green, and red. Connect the Cosmo to a power outlet and place it on a safe, flat surface. Tap the power icon to turn on the device. To start, set the temperature to 55 degrees Celsius and the timer to 20 minutes. Select the blue mode and place the device above the desired treatment area for 20 minutes. Once the blue LED light treatment is complete, set the temperature to 55 degrees Celsius again and the timer for 20 minutes. Select the green mode and place the device above the same treatment area for 20 minutes. Once the green LED light treatment is complete, set the temperature to 55 degrees Celsius again and the timer for 20 minutes. Select the red mode and place the device above the same treatment area for 20 minutes. After completing all treatments, apply your favorite cream or one recommended by a specialist.

IMPORTANT: When placing the device over the facial area, it is essential to wear the protective glasses that come with the device to avoid damage to your eyes.



TEMPERATURE
55, 55 & 55 degrees Celsius



TIMER
20, 20 & 20 minutes



LIGHT
Blue, Green & Red



ERYTHEMA (REDNESS)

DR. ACHIM LEUTH



TARGET
Redness



AREAS OF USE
Face, body, and all
areas of concern



DOSE
45 minutes
per treatment



TREATMENT LENGTH
3 Times per week
for 3 months

DIRECTION

This treatment utilizes yellow light LED therapy and heat. Connect the Cosmo to a power outlet and place it on a safe, flat surface. Tap the power icon to turn on the device. Set the temperature to 40 degrees Celsius and the timer to 45 minutes, and select the yellow mode. Place the device above the desired treatment area for 45 minutes. After completing the treatment, apply your favorite cream or one recommended by a specialist.

IMPORTANT: When placing the device over the facial area, it is essential to wear the protective glasses that come with the device to avoid damage to your eyes.



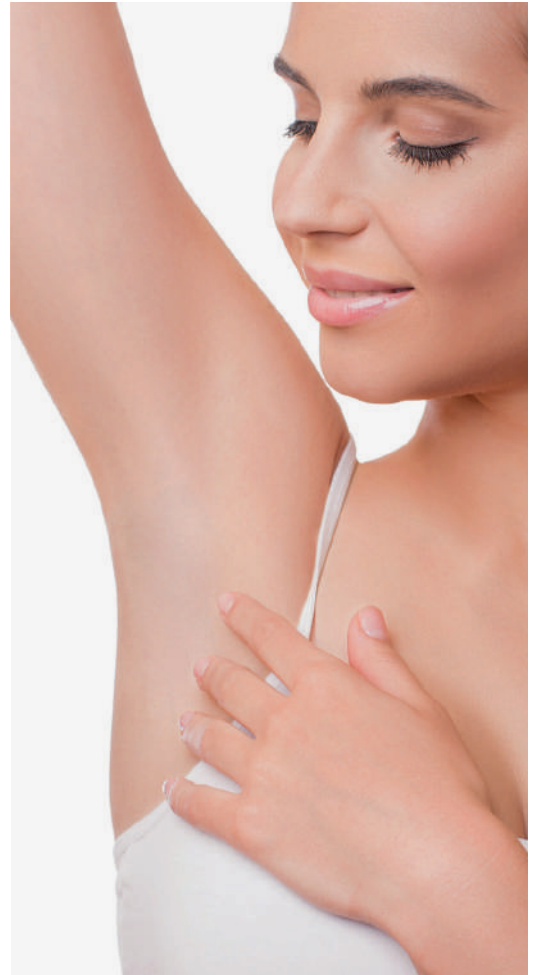
TEMPERATURE
40 degrees Celsius



TIMER
45 minutes



LIGHT
Yellow



SAGGING SKIN

DR. JANA BELVIEW



TARGET
Sagging skin



AREAS OF USE
Face, body, and all
areas of concern



DOSE
75 minutes
per treatment



TREATMENT LENGTH
2 Times per week
for 3 months

DIRECTION

This treatment utilizes green light LED therapy and heat. Connect the Cosmo to a power outlet and place it on a safe, flat surface. Tap the power icon to turn on the device. Set the temperature to 60 degrees Celsius and the timer to 60 minutes, and select the green mode. Place the device above the desired treatment area for 60 minutes. Once the first round of green LED light treatment is complete, set the temperature to 40 degrees Celsius again and the timer for 15 minutes. Place the device above the same treatment area. After completing the treatment, apply your favorite cream or one recommended by a specialist.

IMPORTANT: When placing the device over the facial area, it is essential to wear the protective glasses that come with the device to avoid damage to your eyes.



TEMPERATURE
60 & 40 degrees Celsius



TIMER
60 minutes & 15 minutes



LIGHT
Green



NECK PAIN

SEAN MERLING



TARGET
Neck pain



AREAS OF USE
Neck



DOSE
60 Minutes
per treatment



TREATMENT LENGTH
4 Times per week
for 2 months

DIRECTION

This treatment utilizes red light LED therapy and heat. Connect the Cosmo to a power outlet and place it on a safe, flat surface. Tap the power icon to turn on the device. Set the temperature to 60 degrees Celsius and the timer to 60 minutes. Select the red mode, lie flat on your stomach, and place the device around your neck for 60 minutes. After completing the treatment, apply your favorite cream or one recommended by a specialist.

IMPORTANT: When placing the device over the facial area, it is essential to wear the protective glasses that come with the device to avoid damage to your eyes.



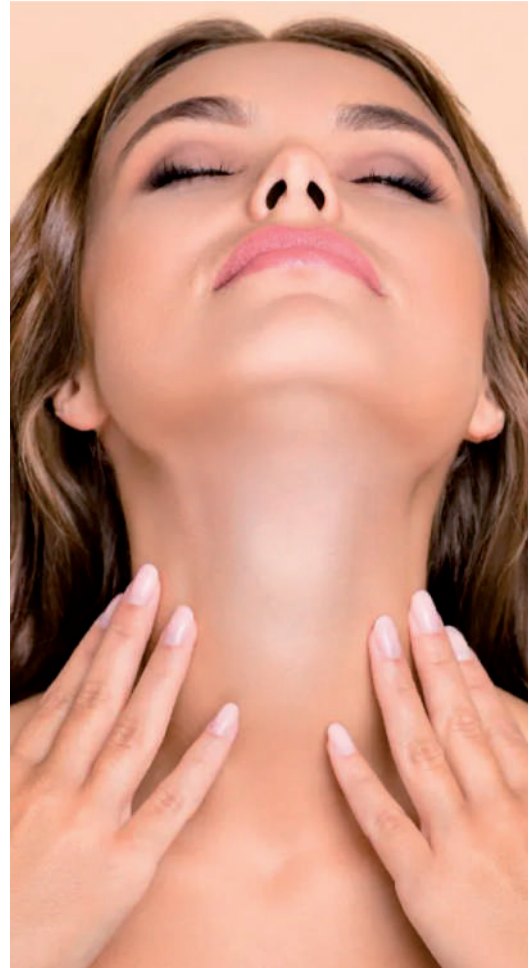
TEMPERATURE
60 degrees Celsius



TIMER
60 minutes



LIGHT
Red



HAIR GROWTH

SEAN MERLING



TARGET
Hair growth



AREAS OF USE
Head



DOSE
30 minutes
per treatment



TREATMENT LENGTH
3 times per week
for 3 months

DIRECTION

This treatment utilizes red light LED therapy and heat. Connect the Cosmo to a power outlet and place it on a safe, flat surface. Tap the power icon to turn on the device. Set the temperature to 40 degrees Celsius and the timer to 30 minutes. Select the red mode, lie down, and place the device around your scalp for 30 minutes.

IMPORTANT: When placing the device over the facial area or head, it is essential to wear the protective glasses that come with the device to avoid damage to your eyes. Do not wash your hair for 2-3 hours prior to treatment.



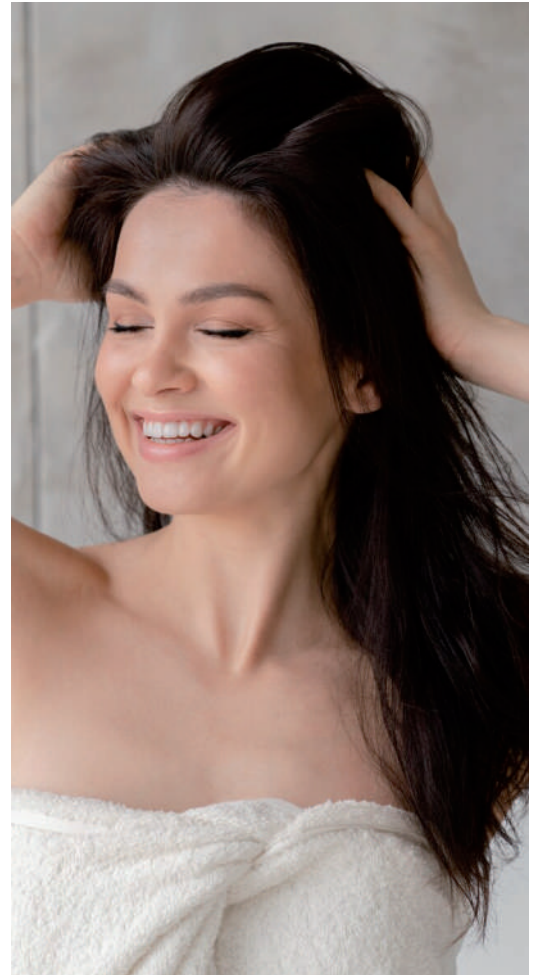
TEMPERATURE
40 degrees Celsius



TIMER
30 minutes



LIGHT
Red



CONTRAINDICATIONS, WARNINGS, AND PRECAUTIONS

CONTRAINDICATIONS

DO NOT use the device if you are pregnant

DO NOT use the device while showering, bathing or swimming

DO NOT drop the device or subject it to excessive force

DO NOT continue to use the device if you develop a skin irritation; consult a doctor if skin irritation persists

DO NOT use the device if you suffer from Lupus erythematosus, Albinism, photosensitive disorders, photosensitive eczema, or any medications that can cause photosensitivity unless you have consulted with a doctor

DO NOT use the device if you suspect that it is damaged or needs repair. Instead, contact Spacetouch for a replacement

WARNINGS

DO NOT use the device without removing all skincare products and/or makeup prior to treatment. Some ingredients in these products may cause light sensitization or reduce the efficiency of the treatment

DO NOT tamper with or attempt to modify the device in any way. Modifying any Spacetouch device will result in a voided warranty

DO NOT continue using the device if it begins to overheat or feel uncomfortably warm on your skin, turn off it immediately and contact customer support

DO NOT continue using the device if you encounter prolonged skin redness or discomfort that lasts for more than 2 hours after treatment. This could be due to light sensitivity or another condition. Please consult your doctor for advice

PRECAUTIONS

Before using Cosmo, we highly recommend that you conduct a light sensitization test. Stop using the device if you experience any adverse effects from the treatment and consult with your doctor if you have any concerns about the product and/or treatment.

LIGHT SENSITIVITY TEST

Step 1: Power the device and place it on your clean face.

Step 2: Use the device for one round of treatment. The device will turn off once the treatment is complete. At any point, if you experience uncomfortable heat or discomfort, stop using the device immediately.

Step 3: Wait for 24 hours before using the device again. If you experience pain, discomfort, or redness that lasts for more than 2 hours, please consult a doctor for advice as you might have light sensitivity.

LIMITED LIFETIME WARRANTY

The lifetime warranty for Spacetouch devices guarantees coverage for manufacturing defects. To activate the warranty, you must register your device

on our website, **www.spacetouch.com**, within 7 days of receiving the order. Failure to register the device correctly and timely will invalidate the warranty. Please note that the warranty does not cover damages caused by intentional or unintended misuse, use of the device for purposes other than its intended use, or any damage beyond normal wear and tear. Certain restrictions may apply.

Register your device by
scanning the QR code below



SPACETOUCH



@spacetouch

